

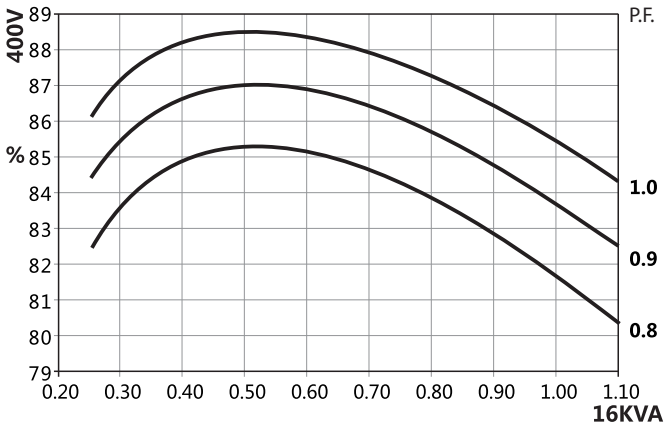
V164D Technical Data Sheet

| | | CONTROL SYSTEM | | | | SELF EXCITED | | | | | |
|-----------------------|--------------|--------------------------------|------|------|------|---|-----|------------|---------------------|------|------|
| INSULATION SYSTEM | CLASS H | A.V.R. | | | | AS440 | | | | | |
| PROTECTION | IP23 | VOLTAGE REGULATION | | | | ±1.0 % | | | | | |
| WINDING PITCH | 2/3 | SUSTAINED SHORT CIRCUIT | | | | NOT | | | | | |
| WINDING LEADS | 12 | WAVEFORM DISTORTION | | | | NO LOAD < 1.5% NON-DISTORTING BALANCED LINEAR LOAD < 5.0% | | | | | |
| MAXIMUM / OVERSPEED | 2250 Rev/Min | TELEPHONE INTERFERENCE: THF | | | | THF < 2% | | | | | |
| | | TELEPHONE INTERFERENCE: TIF | | | | TIF < 50 | | | | | |
| 50Hz CLASS "H" | | | | | | | | | | | |
| RATINGS | | Winding 311 / 0.8 Power Factor | | | | | | Winding 05 | | | |
| Duty/Ambient T°. RISE | | Cont.125K/40°C | | | | Cont.125K/40°C | | | Cont.125K/40°C | | |
| PHASE | | 3 PHASE | | | | 1 PHASE | | | 1 PHASE | | |
| SERIES STAR | | 380 | 400 | 415 | 440 | | | | Power Factor | | |
| PARALLEL STAR | | 190 | 200 | 208 | 220 | | | | 0.8 | 1 | |
| SERIES DELTA | | 220 | 230 | 240 | 254 | | | | | | |
| DOUBLE DELTA | | | | | | 220 | 230 | 240 | 220, 230, 240 | | |
| SLG164D | | KVA | 16 | 16 | 16 | 13.5 | 9.3 | 9.3 | 9.3 | 10.8 | 13.0 |
| | | KW | 12.8 | 12.8 | 12.8 | 10.8 | 7.4 | 7.4 | 7.4 | 8.6 | 13.0 |
| 60Hz CLASS "H" | | | | | | | | | | | |
| RATINGS | | Winding 311 / 0.8 Power Factor | | | | | | Winding 06 | | | |
| Duty/Ambient T°. RISE | | Cont.125K/40°C | | | | Cont.125K/40°C | | | Cont.125K/40°C | | |
| PHASE | | 3 PHASE | | | | 1 PHASE | | | 1 PHASE | | |
| SERIES STAR | | 416 | 440 | 460 | 480 | | | | Power Factor | | |
| PARALLEL STAR | | 208 | 220 | 230 | 240 | | | | 0.8 | 1 | |
| SERIES DELTA | | 240 | 254 | 266 | 277 | | | | | | |
| DOUBLE DELTA | | | | | | 220 | 230 | 240 | 220, 230, 240 | | |
| SLG164D | | KVA | 18.9 | 20 | 20 | 20 | 10 | 10.5 | 11 | 13.5 | 16.5 |
| | | KW | 15.1 | 16 | 16 | 16 | 8 | 8.4 | 8.8 | 10.8 | 16.5 |

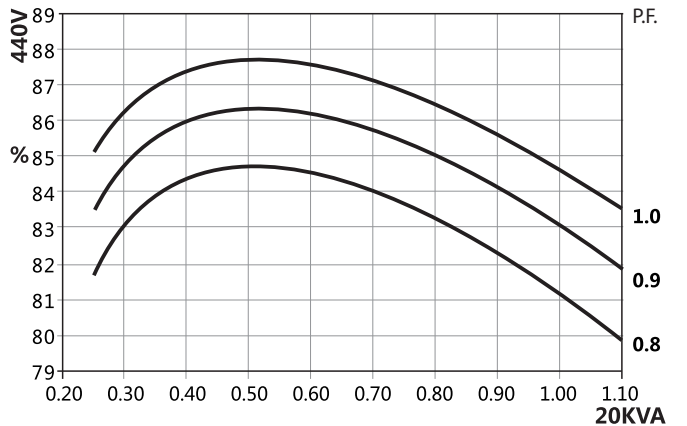
REACTANCES , TIME CONSTANTS (s) : CLASS : H / 400 V

| | SLG164D | |
|---------------------------------|-----------|-----------|
| | 50Hz/400V | 60Hz/440V |
| Xd DIR. AXIS SYNCHRONOUS | 1.734 | 2.149 |
| X'd DIR. AXIS TRANSIENT | 0.177 | 0.219 |
| X''d DIR. AXIS SUBTRANSIENT | 0.111 | 0.138 |
| Xq QUAD. AXIS REACTANCE | 0.861 | 1.068 |
| X'q QUAD. AXIS SUBTRANSIENT | 0.199 | 0.246 |
| XL LEAKAGE REACTANCE | 0.070 | 0.087 |
| X2 NEGATIVE SEQUENCE | 0.166 | 0.206 |
| X0 ZERO SEQUENCE | 0.075 | 0.093 |
| T'd TRANSIENT TIME CONST. (s) | 0.018 | |
| T''d SUB-TRANSTIME CONST. (s) | 0.0045 | |
| T'do O.C. FIELD TIME CONST. (s) | 0.35 | |
| Ta ARMATURE TIME CONST. (s) | 0.0055 | |
| SHORT CIRCUIT RATIO | 1/ Xd | |

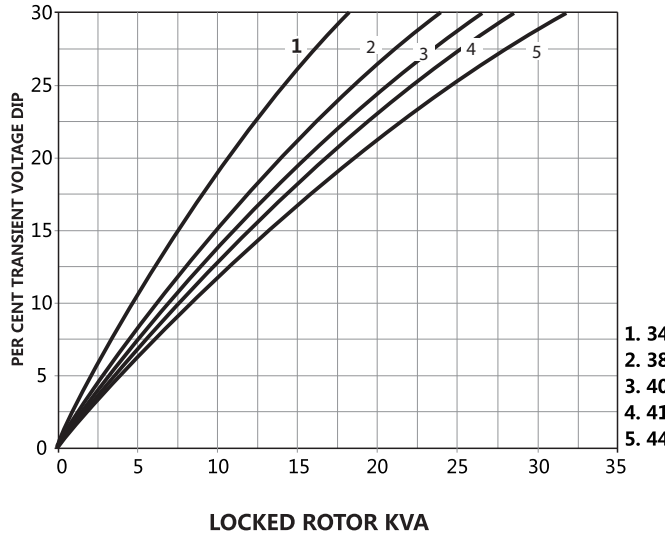
50Hz 400V Winding 311 THREE PHASE EFFICIENCY CURVES



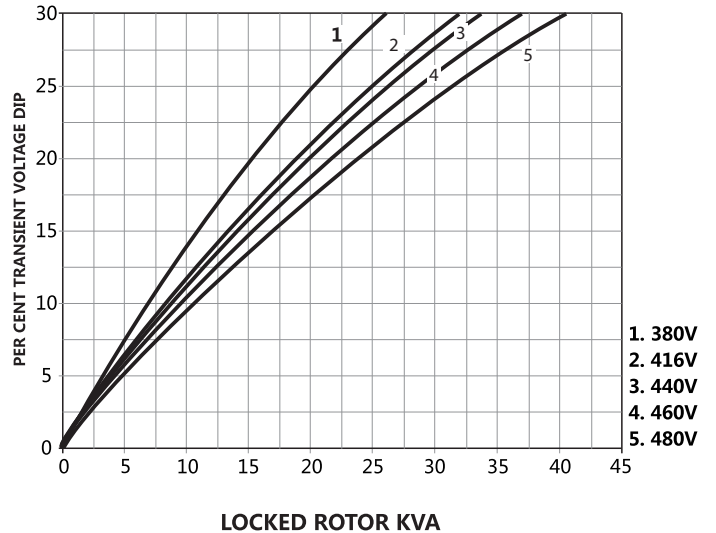
60Hz 440V Winding 311 THREE PHASE EFFICIENCY CURVES



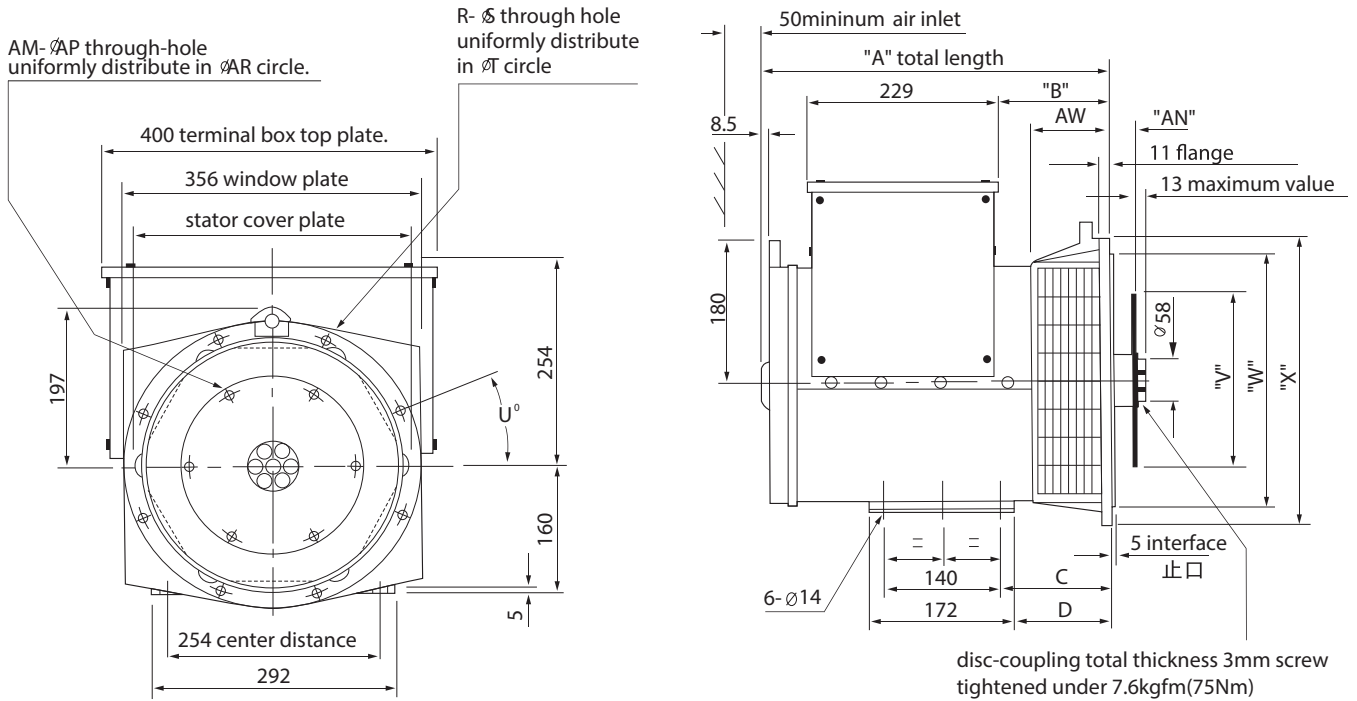
50Hz 400V Winding 311 Locked Rotor Motor Starting Curve



60Hz Winding 311 Locked Rotor Motor Starting Curve



Single bearing external dimension



| DIMENSION (mm) | | | | | | |
|----------------|-------|--------|-------|-------|--------|------|
| Model | A | | | B | | |
| | SAE2 | SAE3/5 | SAE4 | SAE2 | SAE3/5 | SAE4 |
| SLG164D | 416.3 | 403.5 | 391.5 | 146.3 | 119 | 107 |

| FLANGE (mm) | | | | | | | | | |
|-------------|-------|---|----|-------|------|-------|-----|-------|-------|
| S.A.E.NO. | AW | R | S | T | U° | W | X | C | D |
| 3 | 105 | 8 | 11 | 428.6 | 15 | 409.5 | 451 | 145 | 129 |
| 4 | 93 | 8 | 11 | 381.0 | 15 | 361.9 | 402 | 133 | 117 |
| 5 | 105 | 8 | 11 | 333.3 | 22.5 | 314.3 | 356 | 145 | 129 |
| 6* | 124.7 | 8 | 11 | 285.8 | 22.5 | 266.7 | 308 | 164.7 | 148.7 |

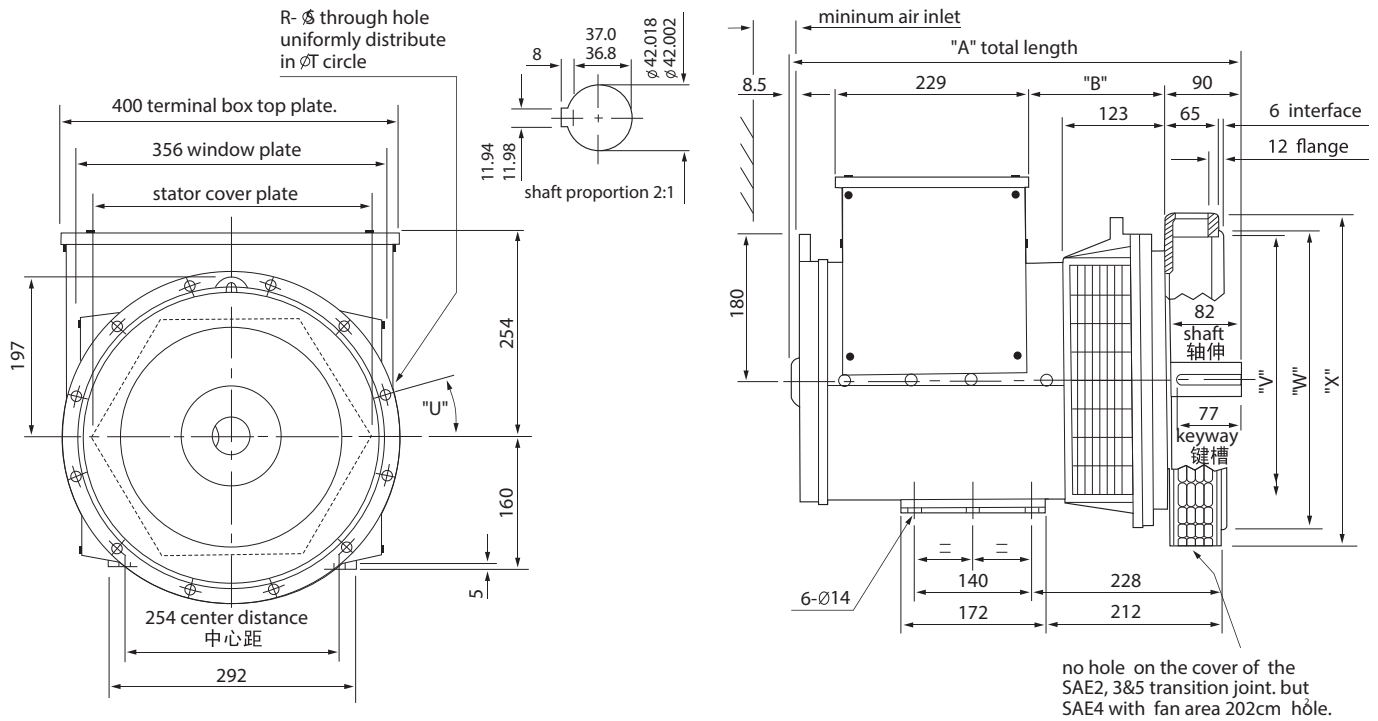
| DISC COUPLING (mm) | | | | | | |
|--------------------|-------|----|-----|-------|-------|--|
| S.A.E.NO. | AN | AM | AP | AR | V | |
| 6.5 | 30.16 | 6 | 8.7 | 200.0 | 215.8 | |
| 7.5 | 30.16 | 8 | 8.7 | 222.2 | 241.2 | |
| 8 | 61.9 | 6 | 11 | 244.5 | 263.4 | |
| 10 | 53.98 | 8 | 11 | 295.3 | 314.2 | |
| 11.5 | 39.68 | 8 | 11 | 333.4 | 352.3 | |

| SAE NO SELECTOR CHOWT | | | | | |
|-----------------------|---------|---------|-------|--------|----------|
| | SAE 6.5 | SAE 7.5 | SAE 8 | SAE 10 | SAE 11.5 |
| SAE 3 | • | • | | • | • |
| SAE 4 | | • | • | • | |
| SAE 5 | • | • | | | |
| SAE 6 | • | | | | |

| TRANSPORTATION DATA | | | | |
|---------------------|---------|---------|-----------|------------------------|
| Model | N.W(kg) | G.W(kg) | LXWXH(cm) | QTY FOR 20FT CONTAINER |
| SLG164D | 99 | 116 | 58x56x62 | 90 |

Note:* "A" dimension should extend 31.77mm corresponding to an additional spacer plate added on SAE6.

Double bearing external dimension



| DIMENSION (mm) | | |
|----------------|-------|-----|
| Model | A | B |
| SLG164D | 511.5 | 137 |

| FLANGE (mm) | | | | | | | |
|-------------|----|----|-------|------|-----|-------|-----|
| S.A.E.NO. | R | S | T | U° | V | W | X |
| 3 | 12 | 11 | 428.6 | 15 | 396 | 409.5 | 451 |
| 4 | 12 | 11 | 381.0 | 15 | 352 | 361.9 | 403 |
| 5 | 8 | 11 | 333.3 | 22.5 | 301 | 314.3 | 356 |

| TRANSPORTATION DATA | | | | |
|---------------------|---------|---------|-----------|------------------------|
| 型号 Model | N.W(kg) | G.W(kg) | LXWXH(cm) | QTY FOR 20FT CONTAINER |
| SLG164D | 112 | 122 | 64x56x62 | 90 |

ISO9001



ITALIAN TECHNOLOGY

www.voltaggio.ae